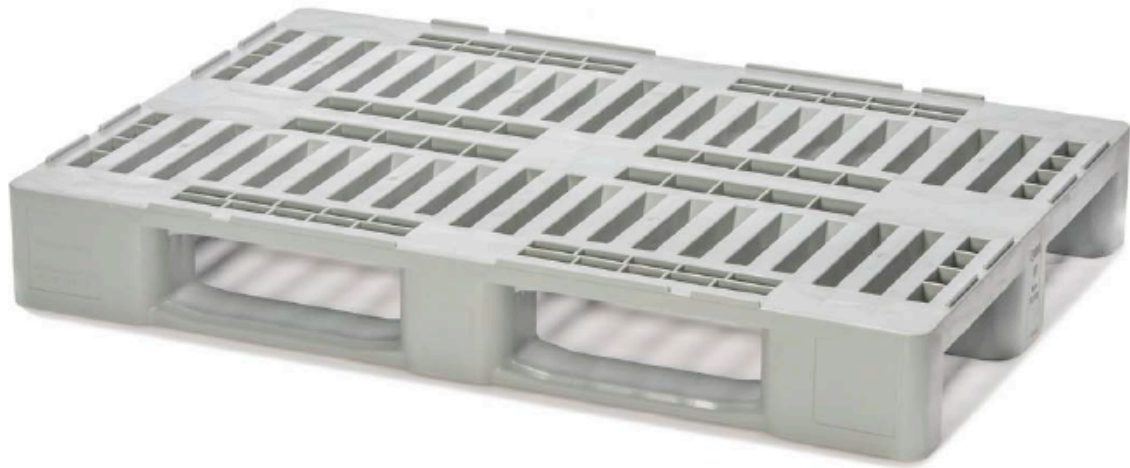




**LAF S.R.L.**

**SEDE LEGALE:** Via dell'Artigianato, 61/62, 24055 Cologno al Serio (BG)  
**SITI PRODUTTIVI:** Via dell'Artigianato, 59/60, 24055 Cologno al Serio (BG)  
 Via Lombardia, 15, 24060 Carobbio degli Angeli (BG)  
 Via Friuli, 5, 46049 Volta Mantovana (MN)  
**CAP.SOC.** 83.333 € i.v. - **P.IVA / C.F. / REG.IMP.** 07728830964 - **R.E.A.** 410332  
**TEL** +39 035.48.72.237 - **FAX** +39 035.48.72.535  
**EMAIL** info@laf.it - **WEB** www.laf.it  
 LAF S.r.l. è una società del gruppo DEA&DEA S.r.l.

## BCL EURO H1

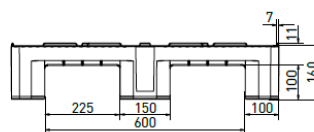
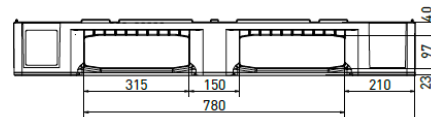
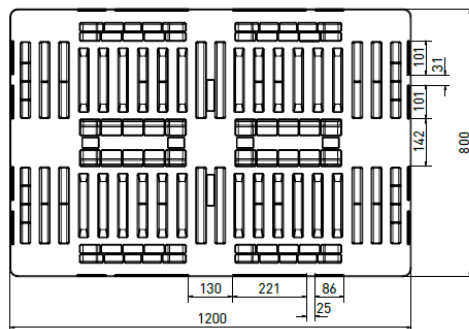


**The standard hygienic pallet with open top deck**

The H1 is used successfully in the food industry for 20 years. It is made from food-grade HDPE and resists as well to cold storage till -40°C as to temperatures up to 70°C. Depending on the application, the pallet is offered with locator blocks, ribs and open or closed runners. In its base version, the pallet is compatible with E1 to E4 Euro plastic containers (400x600). The H1 pallet is also available in the H1-F format suitable for nestable fish crates (400x600 and 400x800).

	Previous name	Bottom support	Top deck	Dimensions [mm]	Load capacities*2 [kg]			Weight [kg]	
					Static	Dynamic	Racking	HDPE	PO
H1 [0D-3R]	H1 Pallet	3 runners	open	1200 x 800 x 160	3400	1700	1000	18,0	-

Entry: 4 ways | Nesting height: - | Safety rim: 11 mm



nominal sizes mm

Rev. 02 del 07/01/2015

LAF Srl è una Società del Gruppo

